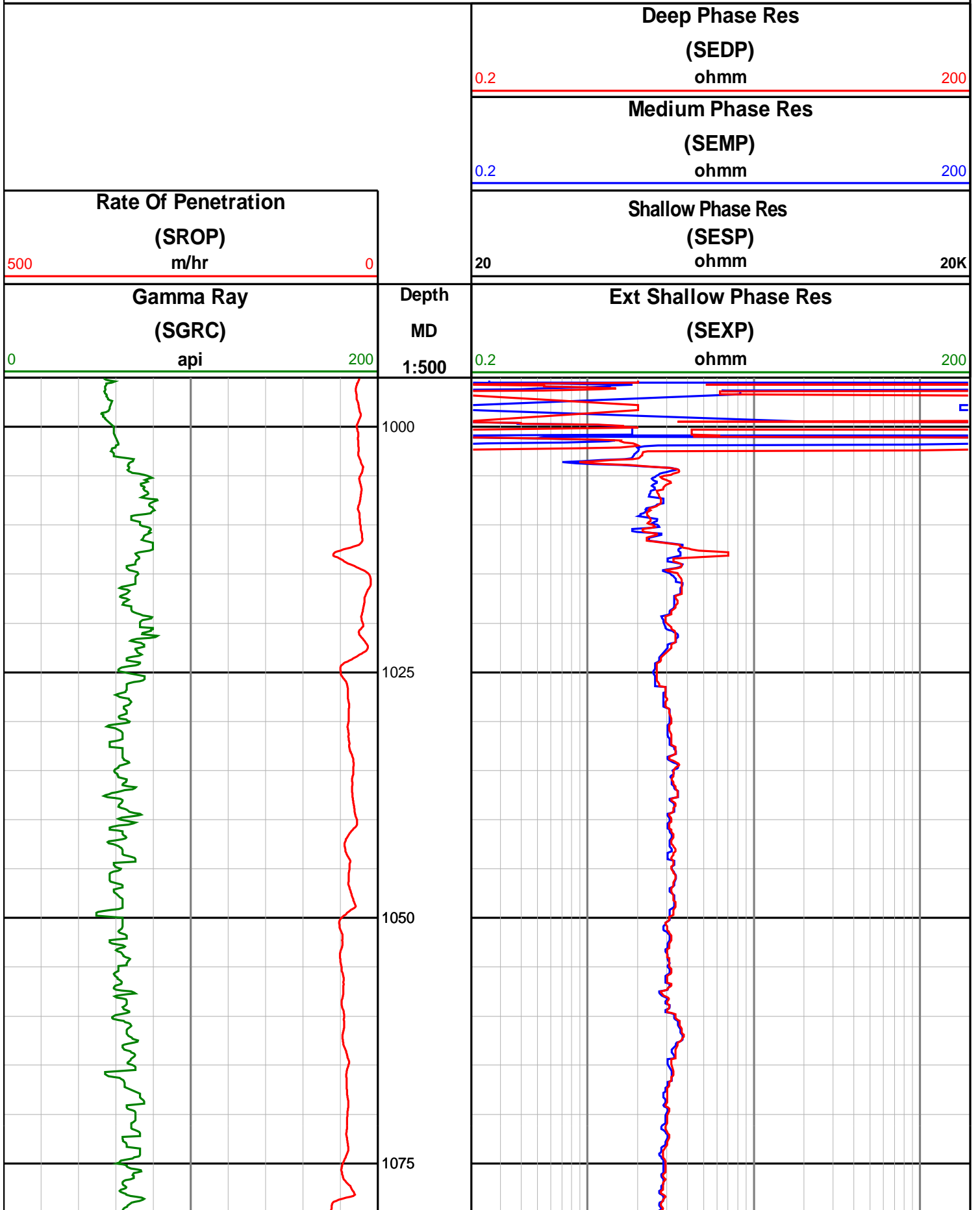
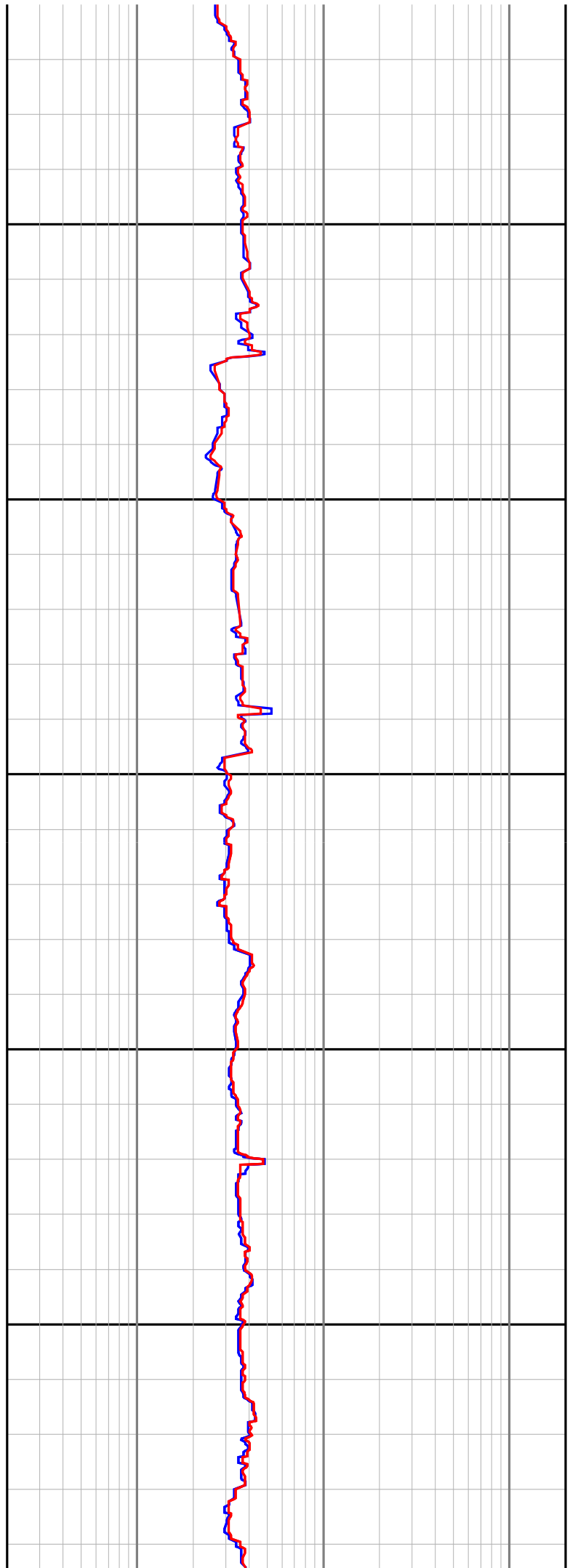
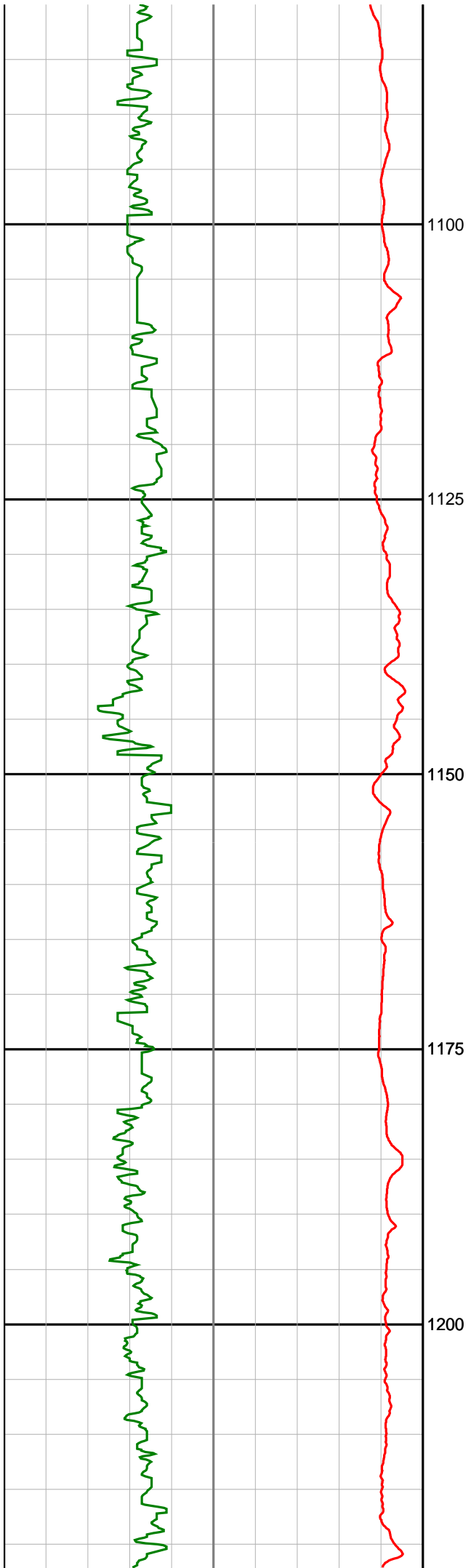


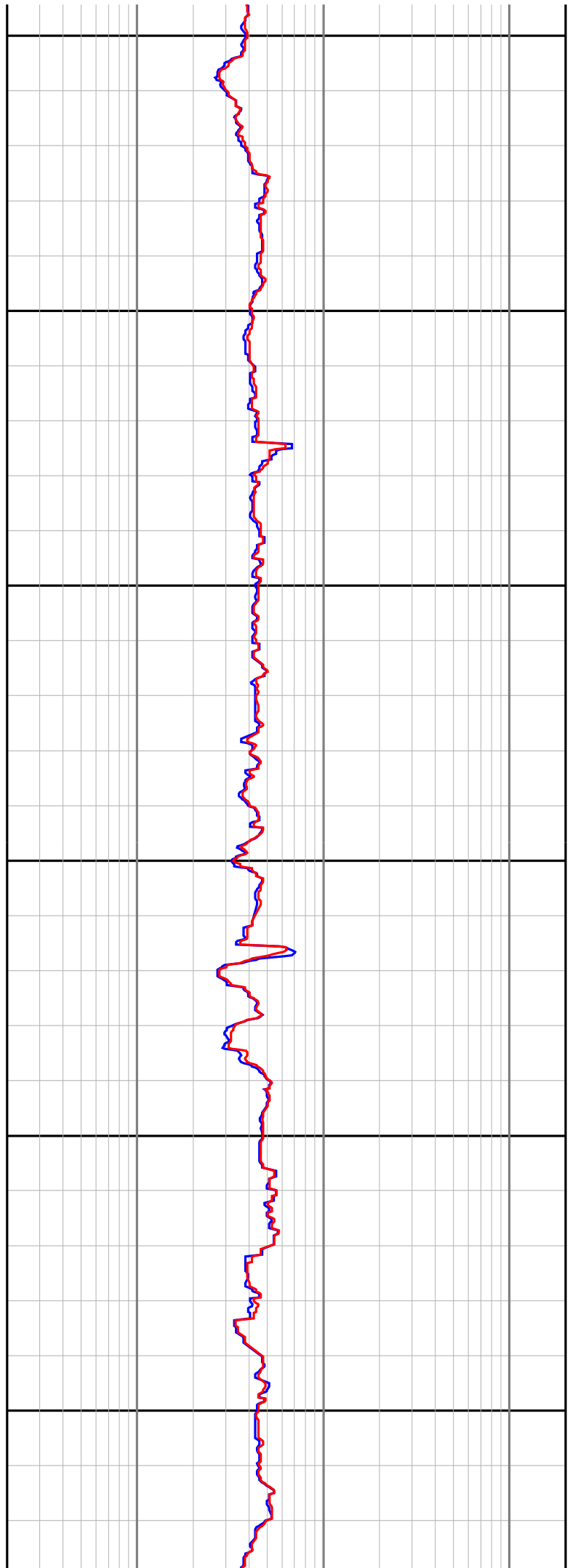
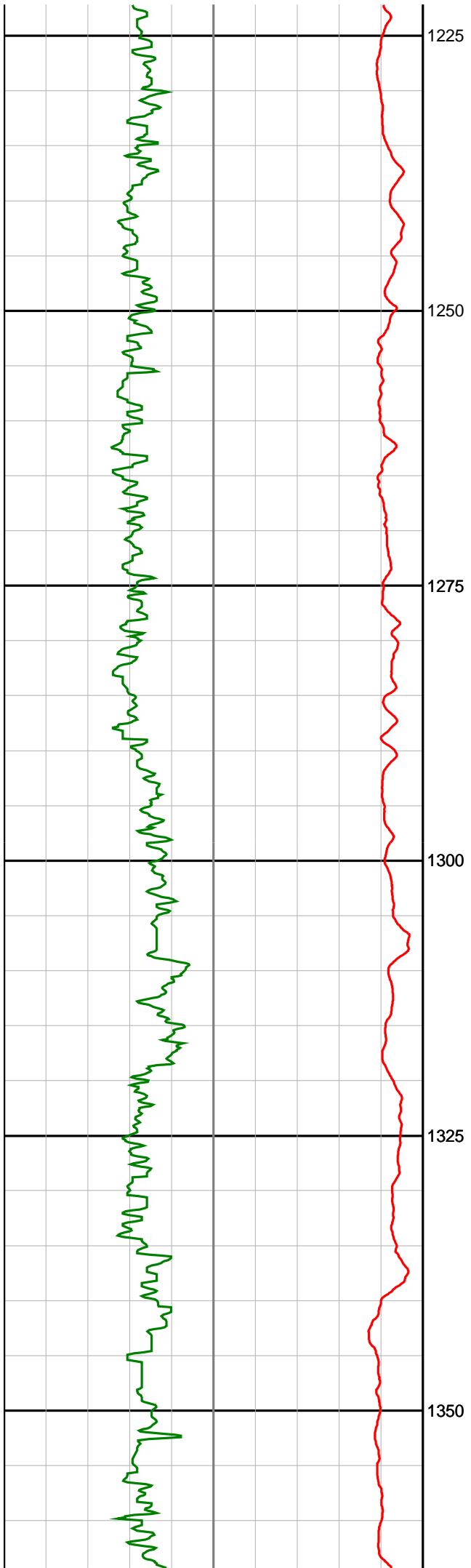
Anzon Australia Ltd

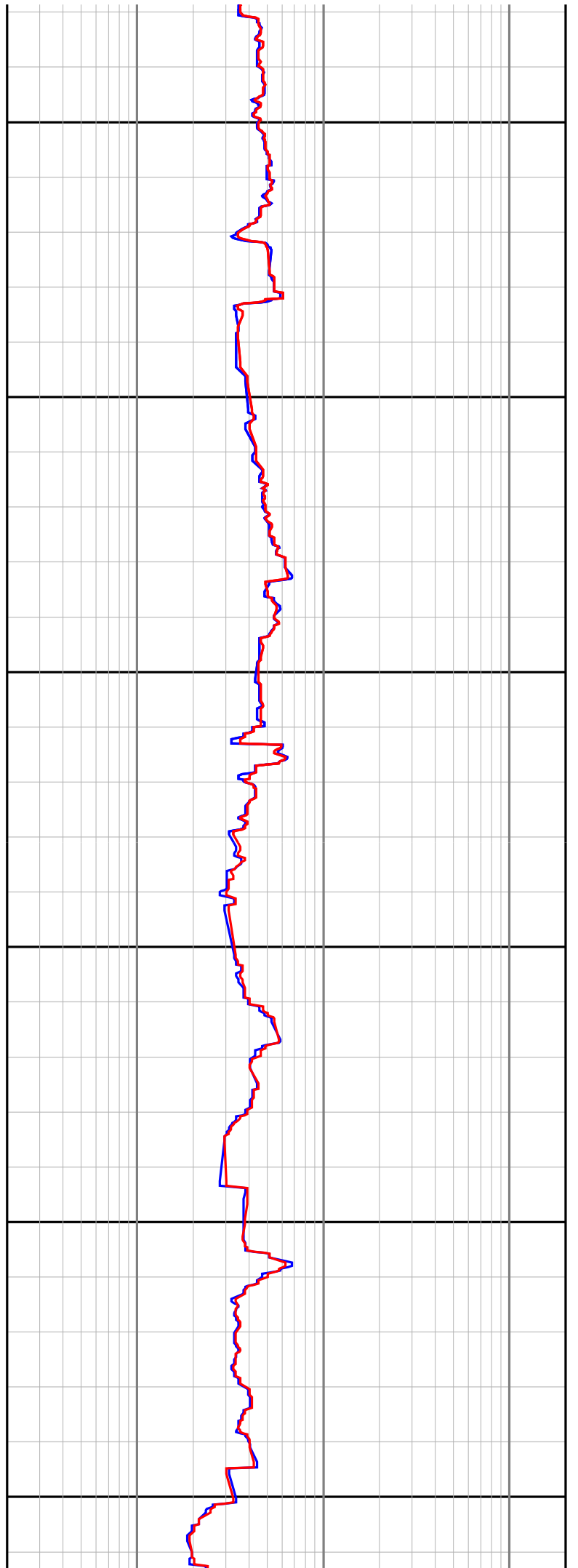
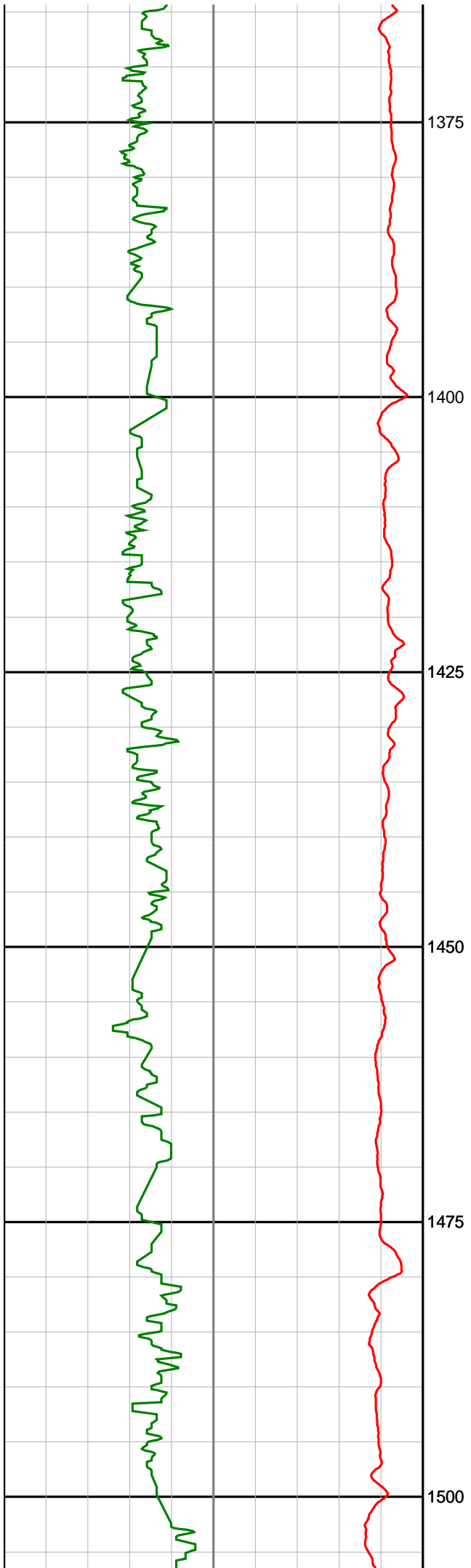
Basker-5

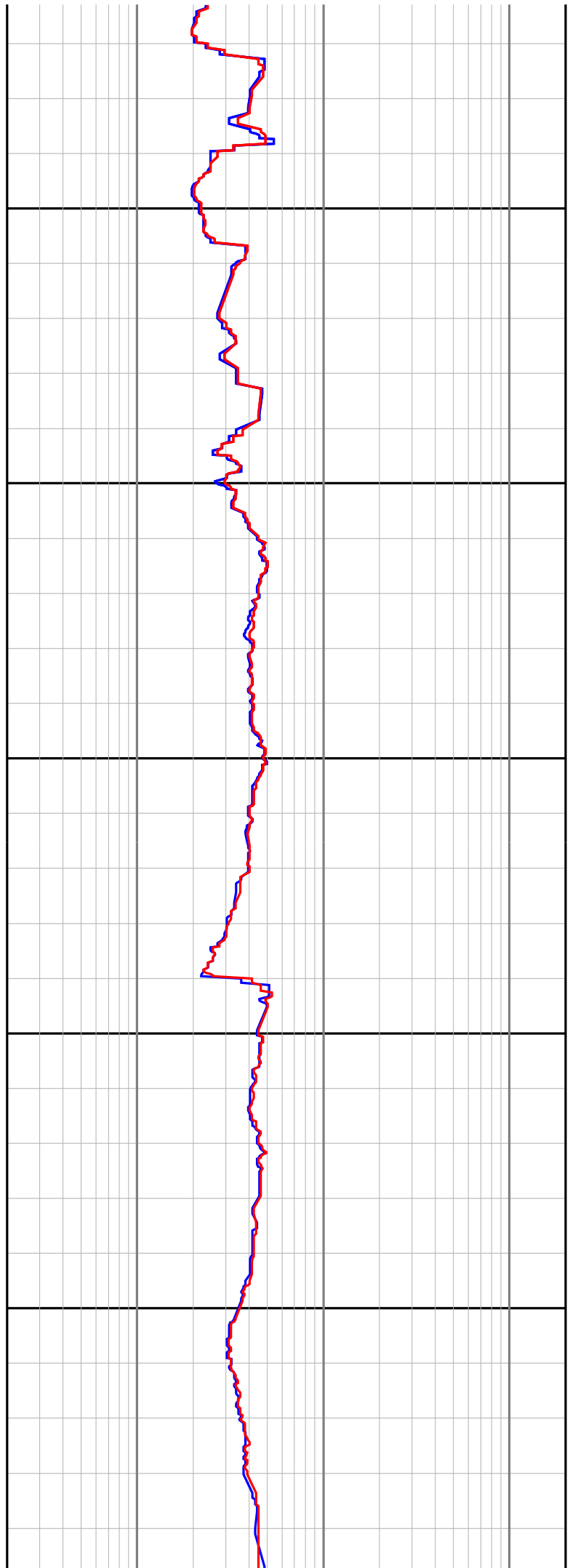
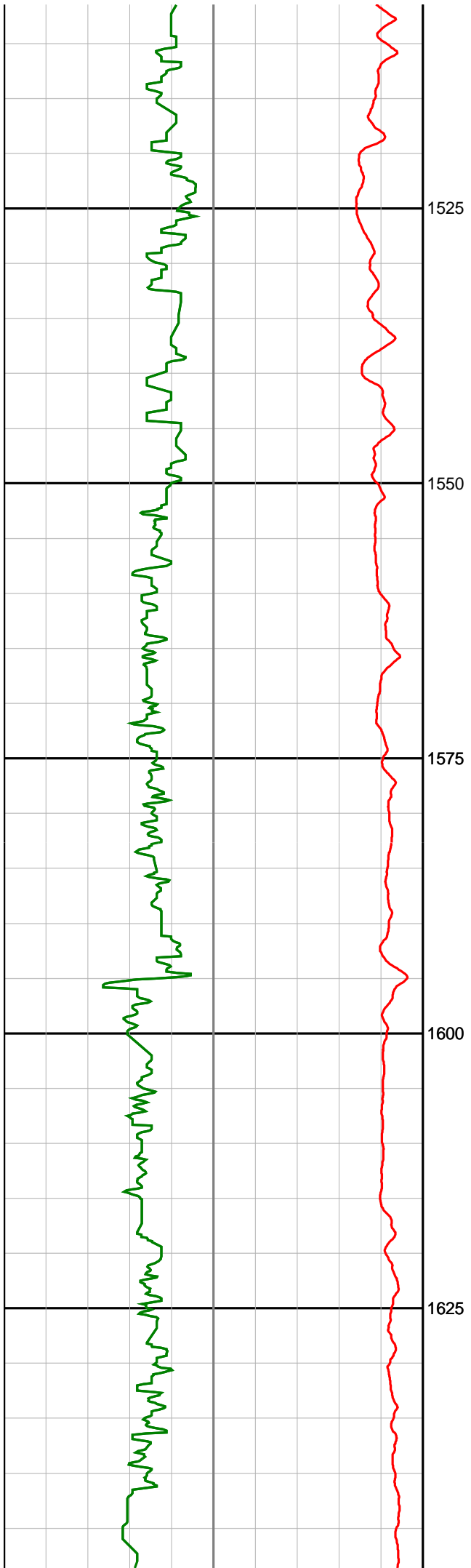
Realtime LWD Log (Permanent Datum - LAT)

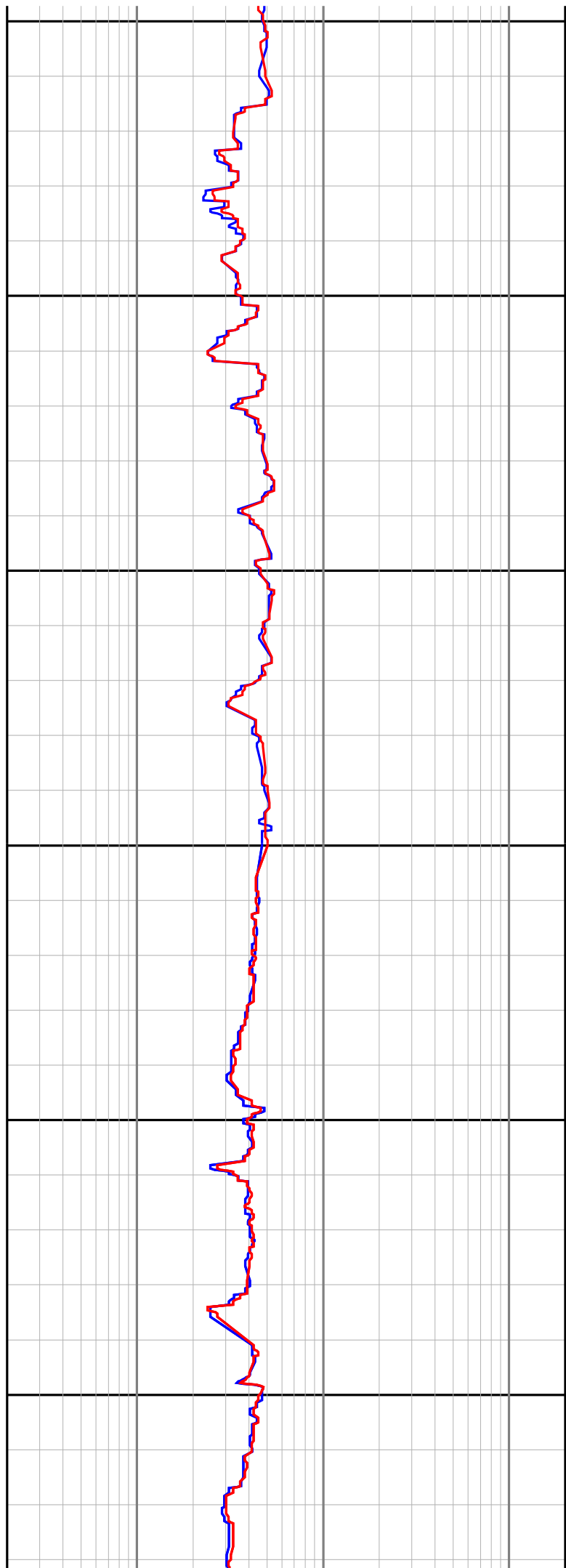
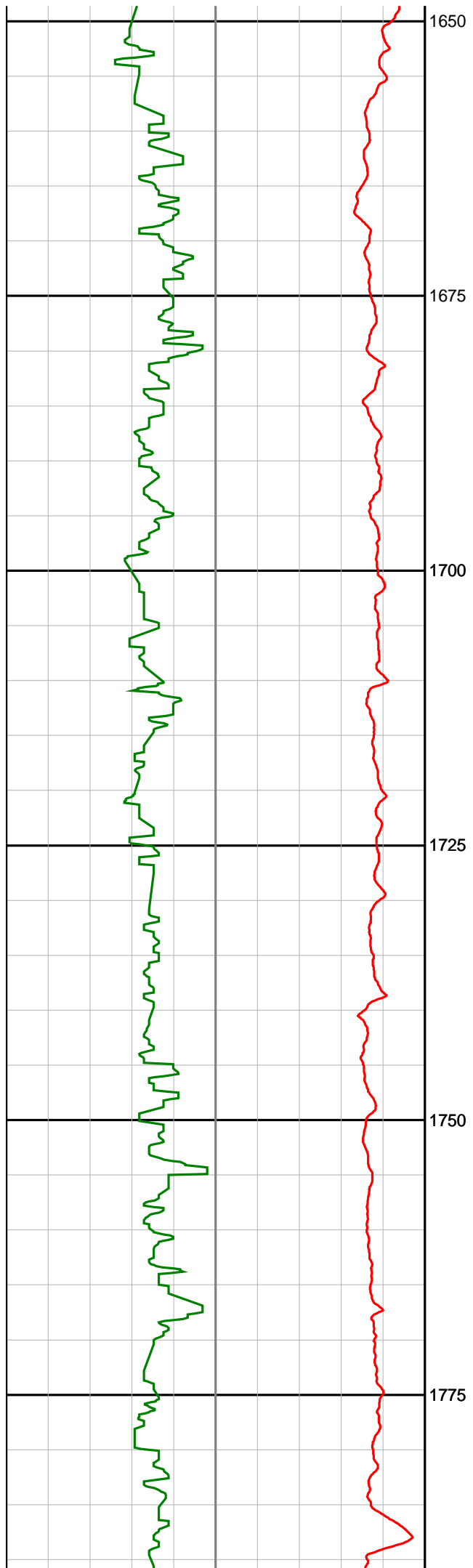


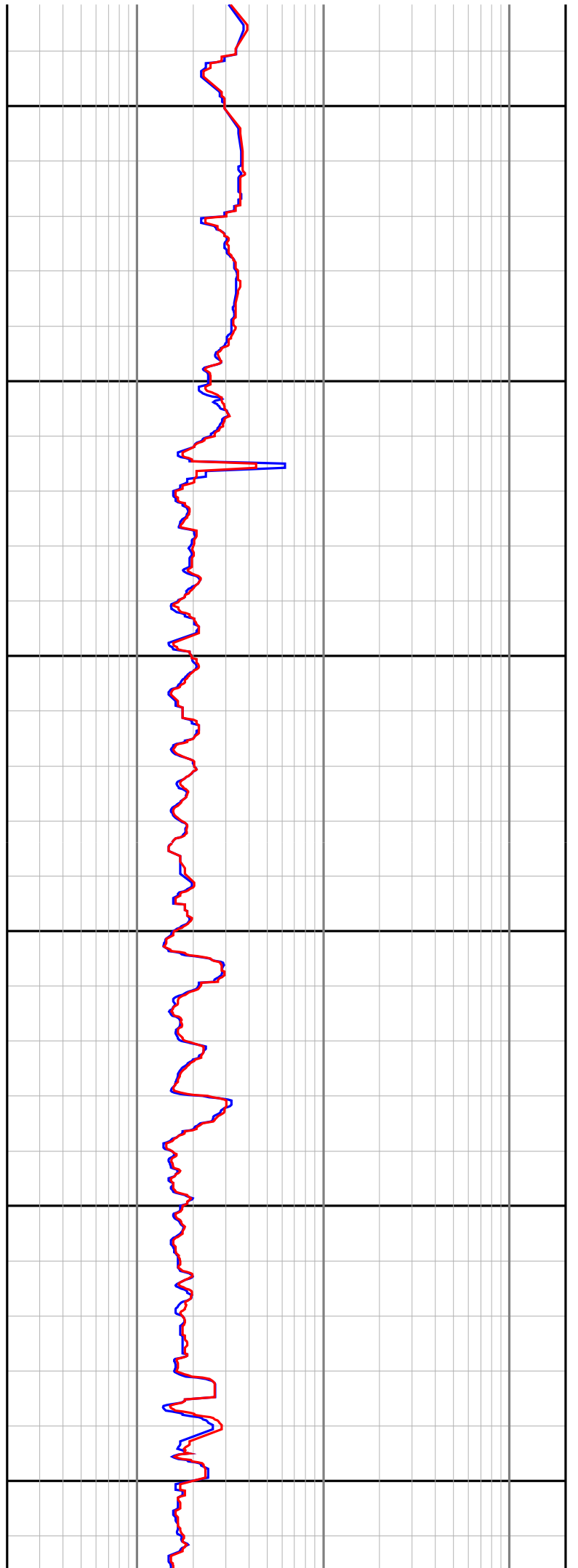
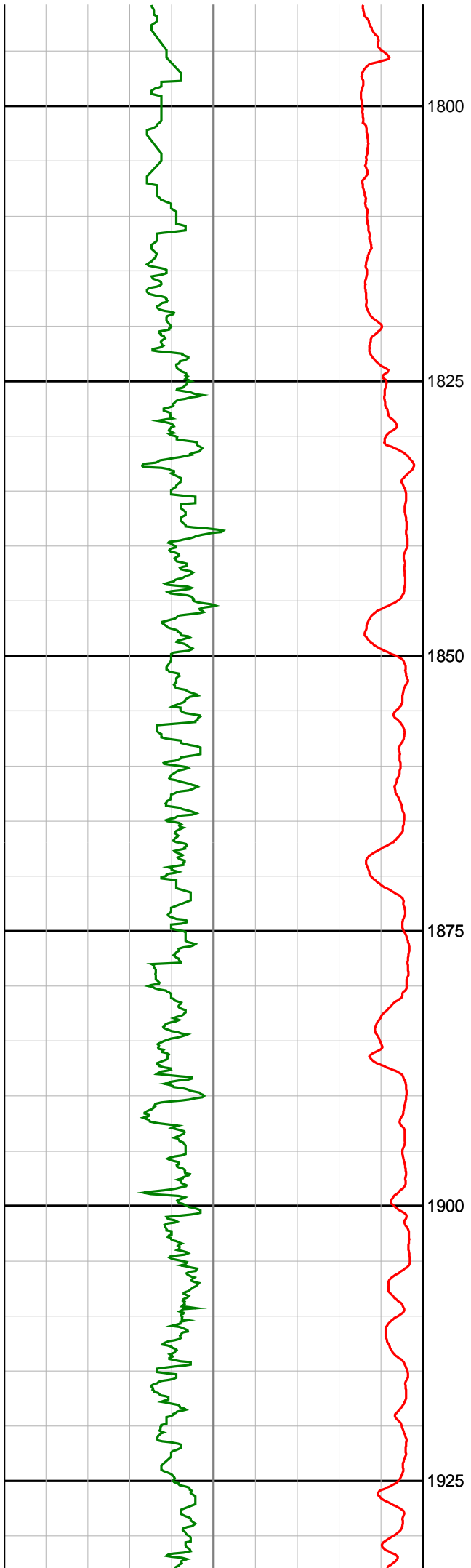


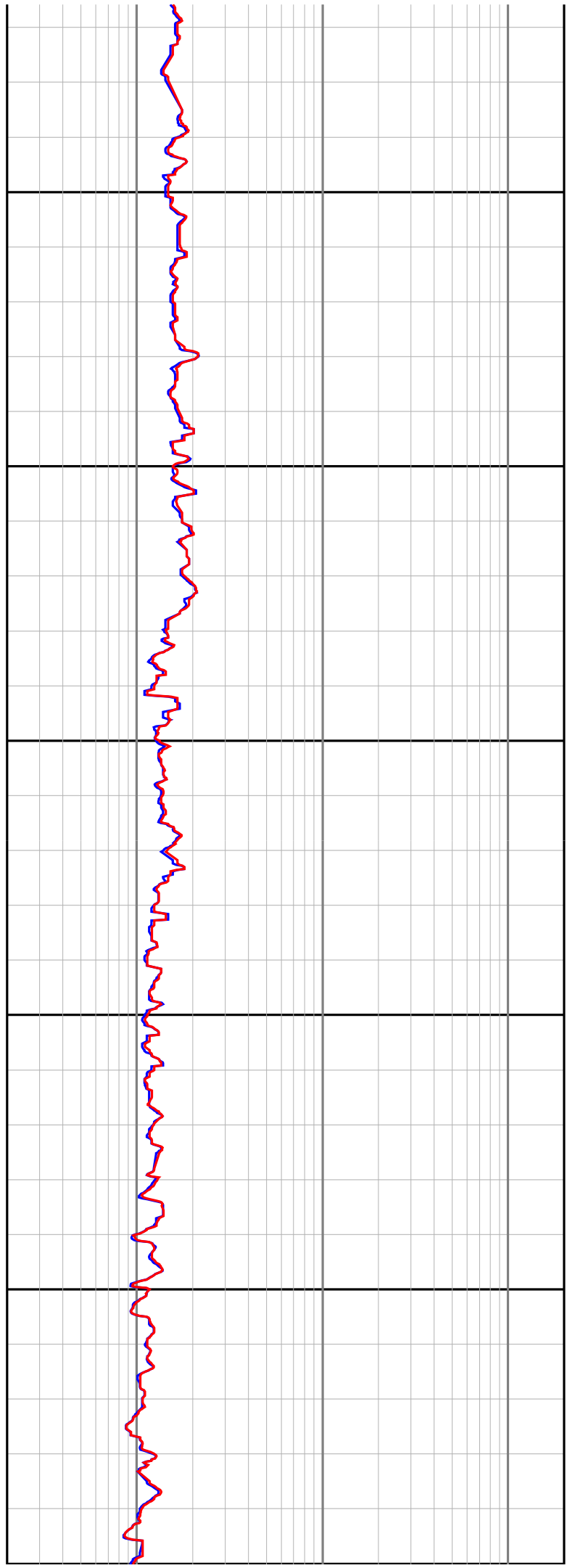
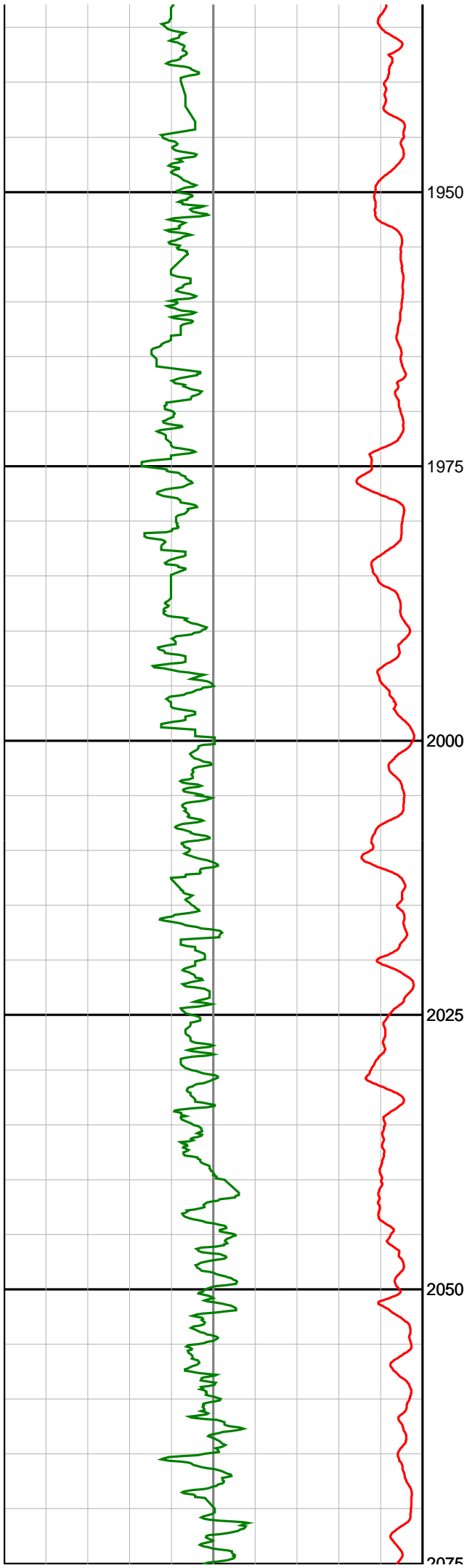


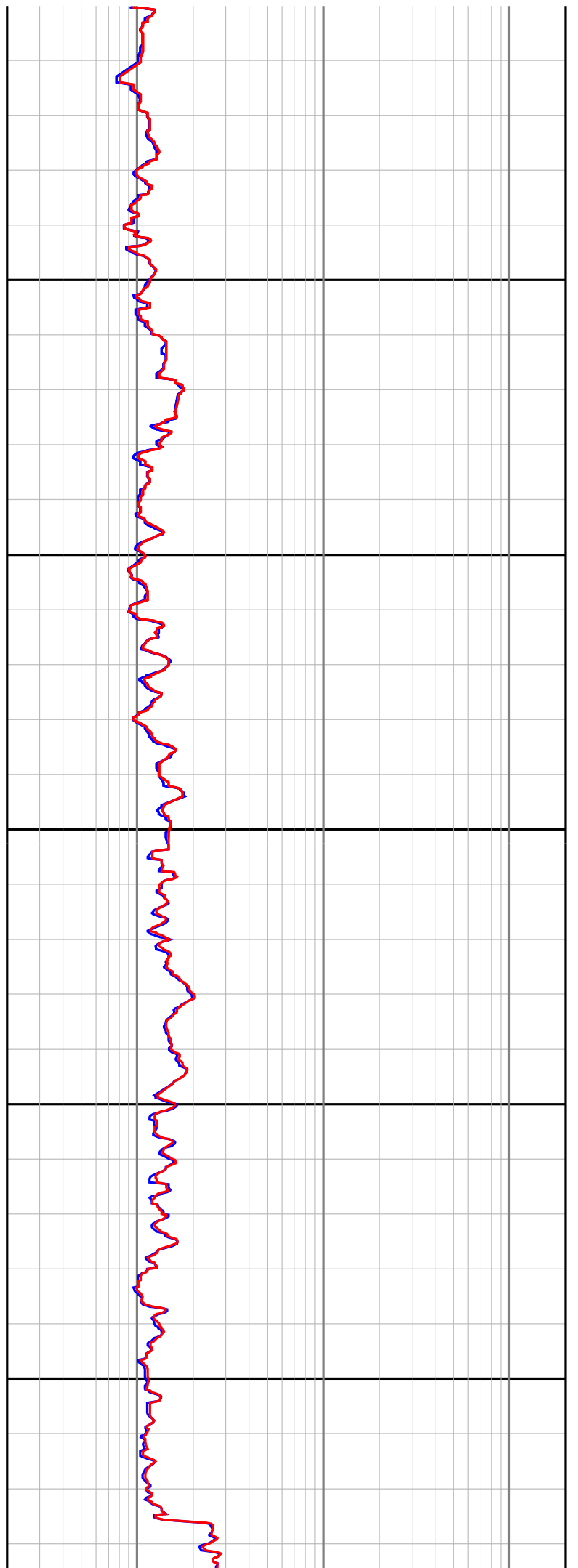
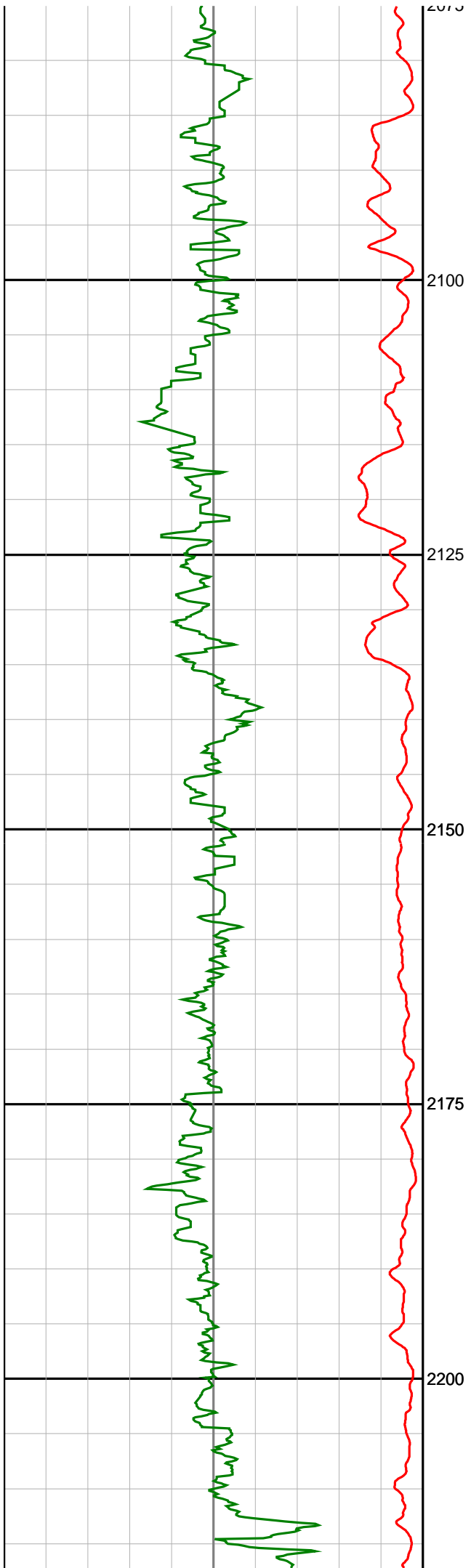


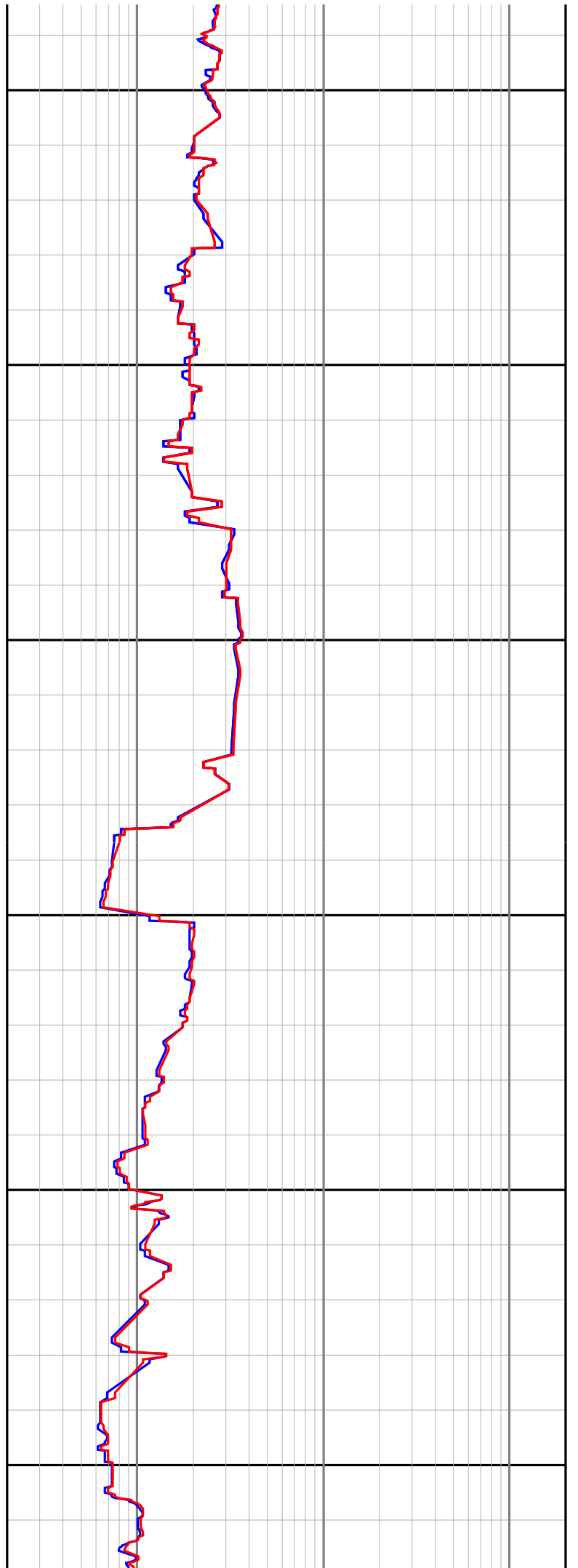
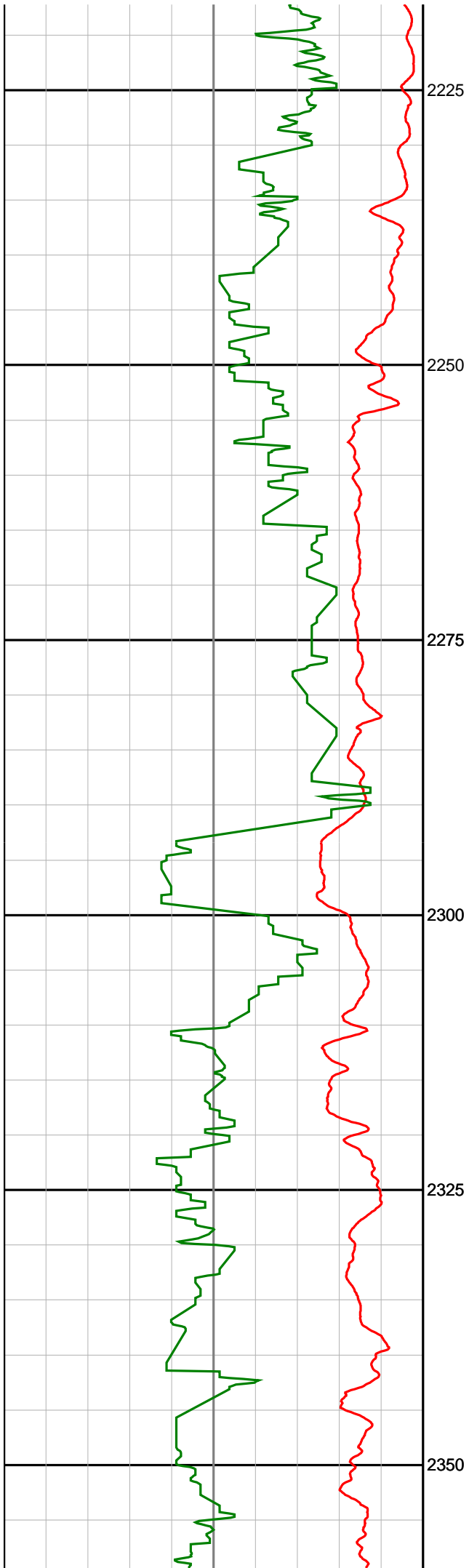


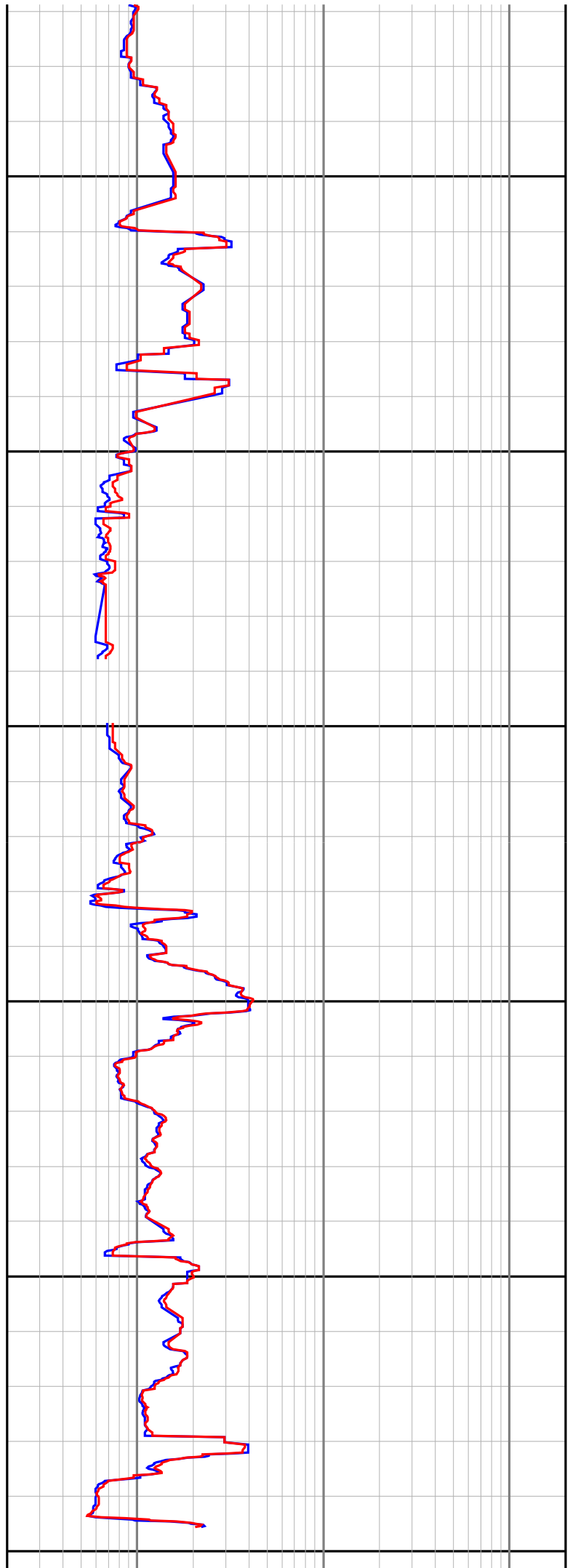
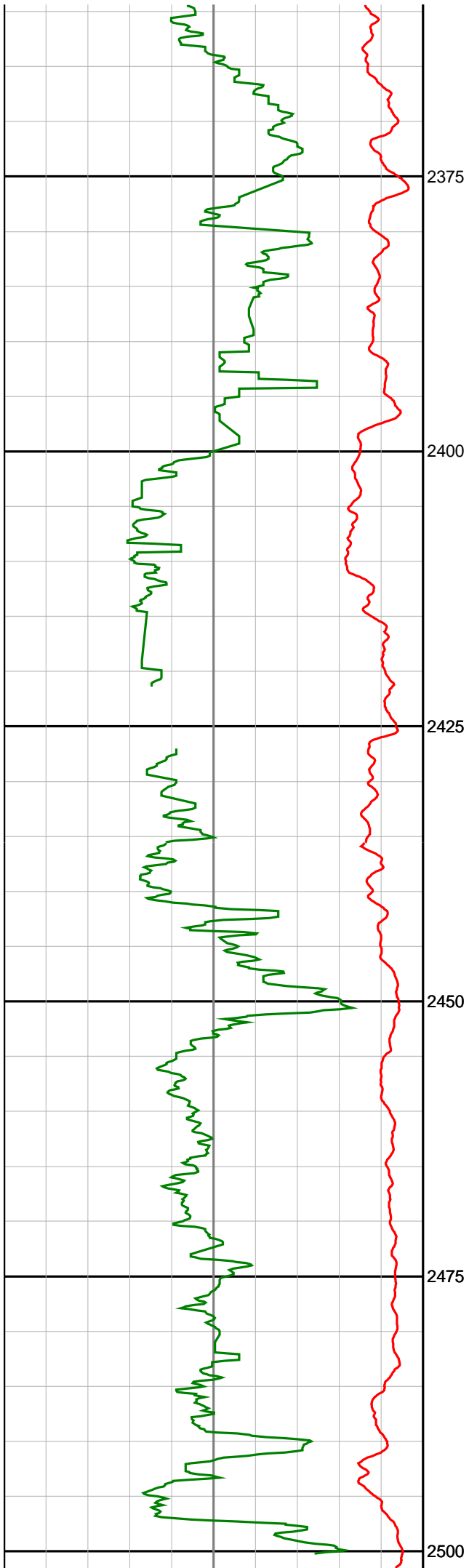


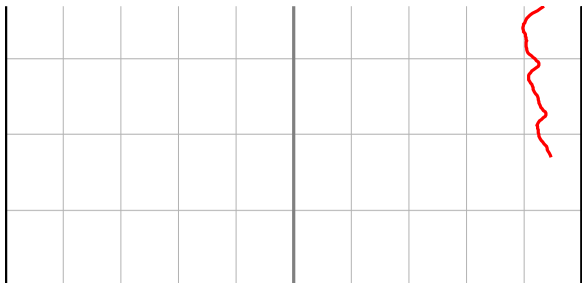
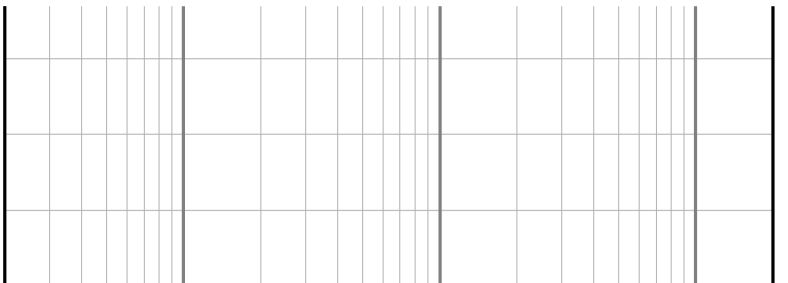










		
<p align="center">Gamma Ray (SGRC)</p> <p align="center">api</p> <p>0 200</p>	<p align="center">Depth MD</p> <p align="center">1:500</p>	<p align="center">Ext Shallow Phase Res (SEXP)</p> <p align="center">ohmm</p> <p>0.2 200</p>
<p align="center">Rate Of Penetration (SROP)</p> <p align="center">m/hr</p> <p>500 0</p>		<p align="center">Shallow Phase Res (SESP)</p> <p align="center">ohmm</p> <p>20 20K</p>
		<p align="center">Medium Phase Res (SEMP)</p> <p align="center">ohmm</p> <p>0.2 200</p>
		<p align="center">Deep Phase Res (SEDP)</p> <p align="center">ohmm</p> <p>0.2 200</p>